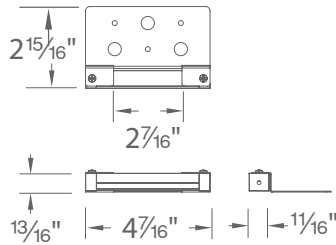
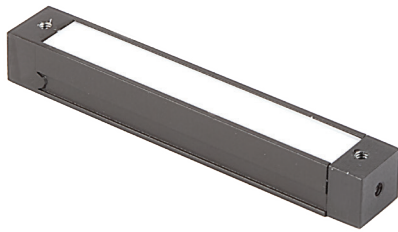


HARDSCAPE - 3"

7031

WAC

LANDSCAPE LIGHTING



Fixture Type:

Catalog Number:

Project: _____

Location: _____

PRODUCT DESCRIPTION

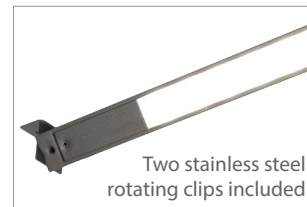
Hardscape luminaire. Multiple mounting options with durable aluminum construction.

FEATURES

- Conveniently adapts into existing 12V system
- Translucent diffuser eliminates worrisome hotspots for even light projection
- Mounting options included; stainless steel under capstone brackets, clips and hardware
- Simple two screw mounting option into handrails, bench seats, decks, steps and fences
- IP66 rated, protected against high pressure water jets
- Potted electronics and conformal coated LEDs for long term moisture protection
- Maintains constant lumen output against voltage drop
- Includes 6 foot lead wire
- UL 1838 Listed

SPECIFICATIONS

Input: 9 - 15VAC (Transformer is required)
Power: 1.4W / 2.5VA
Brightness: 40 lm
CRI: 90+
Rated Life: 70,000 hours
Standard: UL,cUL Listed



ORDERING NUMBER

		Color Temp		Finish	
7031	<i>Hardscape 3"</i>	27	2700K	BZ	<i>Bronze on Aluminum</i>
		30	3000K	GH	<i>Graphite on Aluminum</i>
				SD	<i>Sand on Aluminum</i>

7031-___BZ

Example: **7031-30BZ**

waclighting.com
 Phone (800) 526.2588
 Fax (800) 526.2585

Headquarters/Eastern Distribution Center
 44 Harbor Park Drive
 Port Washington, NY 11050

Central Distribution Center
 1600 Distribution Ct
 Lithia Springs, GA 30122

Western Distribution Center
 1750 Archibald Avenue
 Ontario, CA 91760

HARDSCAPE - 3"

7031

WAC

LANDSCAPE LIGHTING

Magnetic Transformers

*Stainless Steel, 12-15V output, IP65 rated, UL 1838 listed
See transformer spec sheet for details and its accessories*

9075-TRN-SS
75W Max

9150-TRN-SS
150W Max

9300-TRN-SS
300W Max

9600-TRN-SS
600W Max



TESTED MAGNETIC LOW VOLTAGE (MLV) DIMMERS

Luminaire	Dimmer					
	Manufacturer	Family	Model	Power Rating	Range*	Note
7031 3" Hardscape	Lutron	Diva	DVLV-600	600W	55% - 100%	Output maxes at 30% dimming level
		Skylark	SLV-600P	600W	39% - 100%	Output maxes at 30% dimming level
		Skylark	S-10P	1000W		Not recommended

*Low end of this range is determined by output current which may not directly translate to the perceived light output

WAC Lighting fixtures are compatible with a variety of dimmers. For your convenience we have included a compatibility chart showing dimmers which have been tested with our products. The recommended list below is based upon testing conducted in a lab, and the results can vary in certain field applications due to a number of factors. Exclusion from the list does not imply incompatibility, just that it has not been tested by WAC Lighting. Please reference the dimmer manufacturer's instructions for installation, or contact a WAC lighting professional at 800-526-2588.

waclighting.com
Phone (800) 526.2588
Fax (800) 526.2585

Headquarters/Eastern Distribution Center
44 Harbor Park Drive
Port Washington, NY 11050

Central Distribution Center
1600 Distribution Ct
Lithia Springs, GA 30122

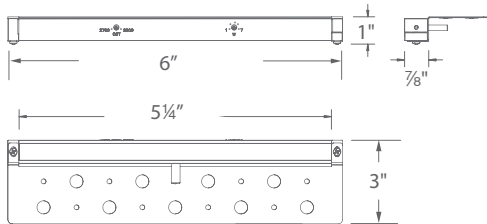
Western Distribution Center
1750 Archibald Avenue
Ontario, CA 91760

HARDSCAPE - 6" DUAL CCT

7061-27/30

WAC

LANDSCAPE LIGHTING



Fixture Type:

Catalog Number:

Project: _____

Location: _____

PRODUCT DESCRIPTION

Hardscape luminaire. Multiple mounting options with durable aluminum construction.

FEATURES

- Integrate brightness control, duo color temperature option
- Conveniently adapts into existing 12V system
- Translucent diffuser eliminates worrisome hotspots for even light projection
- Mounting options included; stainless steel under capstone brackets, clips and hardware
- Simple two screw mounting option into handrails, bench seats, decks, steps and fences
- IP66 rated, protected against high pressure water jets
- Potted electronics and conformal coated LEDs for long term moisture protection
- Maintains constant lumen output against voltage drop
- Includes 6 foot lead wire
- UL 1838 Listed

SPECIFICATIONS

Input: 9 - 15VAC (Transformer is required)
Power: 4.5W / 5.6VA
Brightness: 120 lm
CRI: 90+
Rated Life: 50,000 hours
Standard: UL,cUL Listed

ORDERING NUMBER

		Color Temp	Finish
7061	<i>Hardscape 6"</i>	27/30 2700K or 3000K	BZ <i>Bronze on Aluminum</i> GH <i>Graphite on Aluminum</i> SD <i>Sand on Aluminum</i>

7061-27/30__

Example: **7061-27/30GH**

wacighting.com

Phone (800) 526.2588

Fax (800) 526.2585

Headquarters/Eastern Distribution Center

44 Harbor Park Drive

Port Washington, NY 11050

Central Distribution Center

1600 Distribution Ct

Lithia Springs, GA 30122

Western Distribution Center

1750 Archibald Avenue

Ontario, CA 91760

HARDSCAPE - 6" DUAL CCT

7061-27/30

WAC

LANDSCAPE LIGHTING



Magnetic Transformers

*Stainless Steel, 12-15V output, IP65 rated, UL 1838 listed
See transformer spec sheet for details and its accessories*

9075-TRN-SS
75W Max

9150-TRN-SS
150W Max

9300-TRN-SS
300W Max

9600-TRN-SS
600W Max



waclighting.com
Phone (800) 526.2588
Fax (800) 526.2585

Headquarters/Eastern Distribution Center
44 Harbor Park Drive
Port Washington, NY 11050

Central Distribution Center
1600 Distribution Ct
Lithia Springs, GA 30122

Western Distribution Center
1750 Archibald Avenue
Ontario, CA 91760

HARDSCAPE - 12" DUAL CCT

7121-27/30

WAC

LANDSCAPE LIGHTING

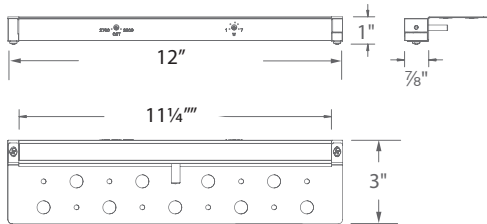


Fixture Type:

Catalog Number:

Project: _____

Location: _____



PRODUCT DESCRIPTION

Hardscape luminaire. Multiple mounting options with durable aluminum construction.

FEATURES

- Integrate brightness control, duo color temperature option
- Conveniently adapts into existing 12V system
- Translucent diffuser eliminates worrisome hotspots for even light projection
- Mounting options included; stainless steel under capstone brackets, clips and hardware
- Simple two screw mounting option into handrails, bench seats, decks, steps and fences
- IP66 rated, protected against high pressure water jets
- Potted electronics and conformal coated LEDs for long term moisture protection
- Maintains constant lumen output against voltage drop
- Includes 6 foot lead wire
- UL 1838 Listed

SPECIFICATIONS

Input: 9 - 15VAC (Transformer is required)
Power: 7.0W / 7.3VA
Brightness: 225 lm
CRI: 90+
Rated Life: 50,000 hours
Standards: UL,cUL Listed

ORDERING NUMBER

		Color Temp	Finish
7121	<i>Duo CCT Hardscape 12"</i>	2700K	BZ <i>Bronze on Aluminum</i>
		or	GH <i>Graphite on Aluminum</i>
		3000K	SD <i>Sand on Aluminum</i>

7121-27/30__

Example: **7121-27/30BZ**

wacighting.com
 Phone (800) 526.2588
 Fax (800) 526.2585

Headquarters/Eastern Distribution Center
 44 Harbor Park Drive
 Port Washington, NY 11050

Central Distribution Center
 1600 Distribution Ct
 Lithia Springs, GA 30122

Western Distribution Center
 1750 Archibald Avenue
 Ontario, CA 91760

HARDSCAPE - 12" DUAL CCT

7121-27/30

WAC

LANDSCAPE LIGHTING



Magnetic Transformers

*Stainless Steel, 12-15V output, IP65 rated, UL 1838 listed
See transformer spec sheet for details and its accessories*

9075-TRN-SS
75W Max

9150-TRN-SS
150W Max

9300-TRN-SS
300W Max

9600-TRN-SS
600W Max



waclighting.com
Phone (800) 526.2588
Fax (800) 526.2585

Headquarters/Eastern Distribution Center
44 Harbor Park Drive
Port Washington, NY 11050

Central Distribution Center
1600 Distribution Ct
Lithia Springs, GA 30122

Western Distribution Center
1750 Archibald Avenue
Ontario, CA 91760

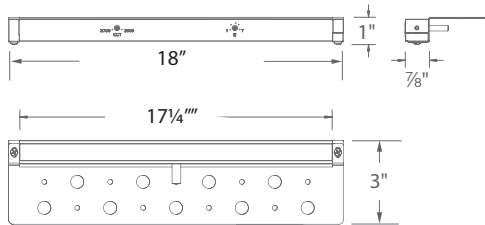
WAC Lighting retains the right to modify the design of our products at any time as part of the company's continuous improvement program.

HARDSCAPE - 18" DUAL CCT

7181-27/30

WAC

LANDSCAPE LIGHTING



Fixture Type:

Catalog Number:

Project: _____

Location: _____

PRODUCT DESCRIPTION

Hardscape luminaire. Multiple mounting options with durable aluminum construction.

FEATURES

- Integrate brightness control, duo color temperature option
- Conveniently adapts into existing 12V system
- Translucent diffuser eliminates worrisome hotspots for even light projection
- Mounting options included; stainless steel under capstone brackets, clips and hardware
- Simple two screw mounting option into handrails, bench seats, decks, steps and fences
- IP66 rated, protected against high pressure water jets
- Potted electronics and conformal coated LEDs for long term moisture protection
- Maintains constant lumen output against voltage drop
- Includes 6 foot lead wire
- UL 1838 Listed

SPECIFICATIONS

Input: 9 - 15VAC (Transformer is required)
Power: 8.5W / 8.5VA
Brightness: 330 lm
CRI: 90+
Rated Life: 50,000 hours
Standard: UL,cUL Listed

ORDERING NUMBER

		Color Temp	Finish
7181	<i>Duo CCT Hardscape 12"</i>	2700K	BZ <i>Bronze on Aluminum</i>
		or	GH <i>Graphite on Aluminum</i>
		3000K	SD <i>Sand on Aluminum</i>

7181-27/30__

Example: **7181-27/30BZ**

waclighting.com

Phone (800) 526.2588

Fax (800) 526.2585

Headquarters/Eastern Distribution Center

44 Harbor Park Drive

Port Washington, NY 11050

Central Distribution Center

1600 Distribution Ct

Lithia Springs, GA 30122

Western Distribution Center

1750 Archibald Avenue

Ontario, CA 91760

WAC Lighting retains the right to modify the design of our products at any time as part of the company's continuous improvement program.

HARDSCAPE - 18" DUAL CCT

7181-27/30

WAC

LANDSCAPE LIGHTING



Magnetic Transformers

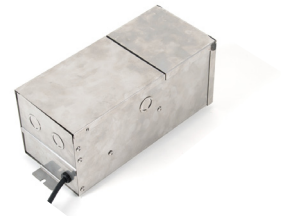
*Stainless Steel, 12-15V output, IP65 rated, UL 1838 listed
See transformer spec sheet for details and its accessories*

9075-TRN-SS
75W Max

9150-TRN-SS
150W Max

9300-TRN-SS
300W Max

9600-TRN-SS
600W Max



waclighting.com
Phone (800) 526.2588
Fax (800) 526.2585

Headquarters/Eastern Distribution Center
44 Harbor Park Drive
Port Washington, NY 11050

Central Distribution Center
1600 Distribution Ct
Lithia Springs, GA 30122

Western Distribution Center
1750 Archibald Avenue
Ontario, CA 91760

WAC Lighting retains the right to modify the design of our products at any time as part of the company's continuous improvement program.